

THE  
AMERICAN  
MIME  
THEATRE

PERFORMANCE DEMONSTRATIONS  
in New York City

Monday  
September 13, 1993  
6 P.M.

at  
THE NEW SCHOOL  
66 West 12th Street, NYC



Friday  
January 7, 1994  
3 P.M.

at  
Bruno Walter Auditorium  
The New York Public Library  
For The Performing Arts  
40 Lincoln Center Plaza, NYC

THE  
AMERICAN  
MIME  
THEATRE



THE  
AMERICAN  
MIME  
THEATRE



PERFORMANCE DEMONSTRATION

at

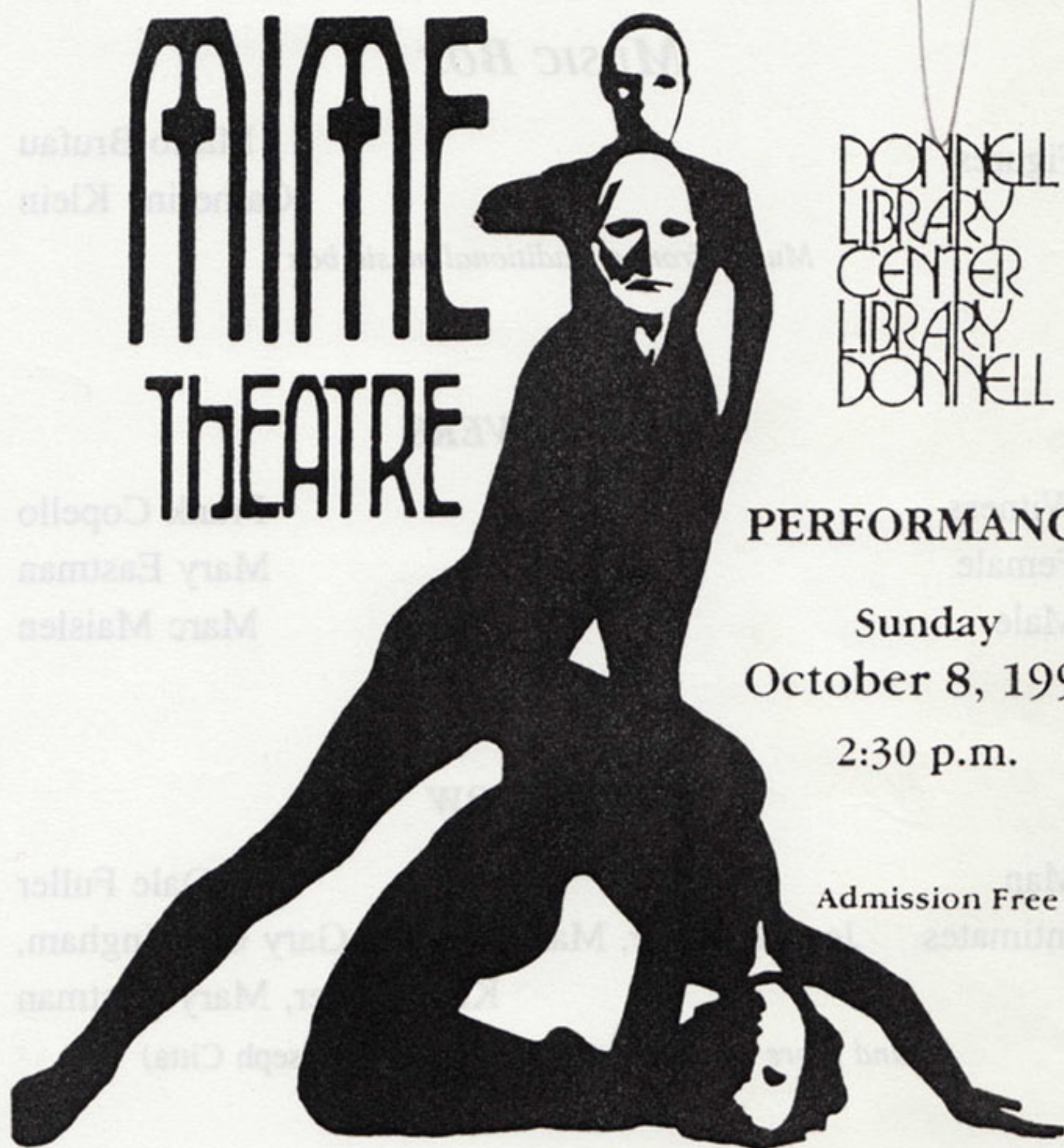
THE NEW SCHOOL  
66 West 12th Street, NYC

Monday  
September 13, 1993  
6 P.M.





# THE AMERICAN MIME THEATRE



DONNELL  
LIBRARY  
CENTER  
LIBRARY  
DONNELL

PERFORMANCE

Sunday  
October 8, 1995

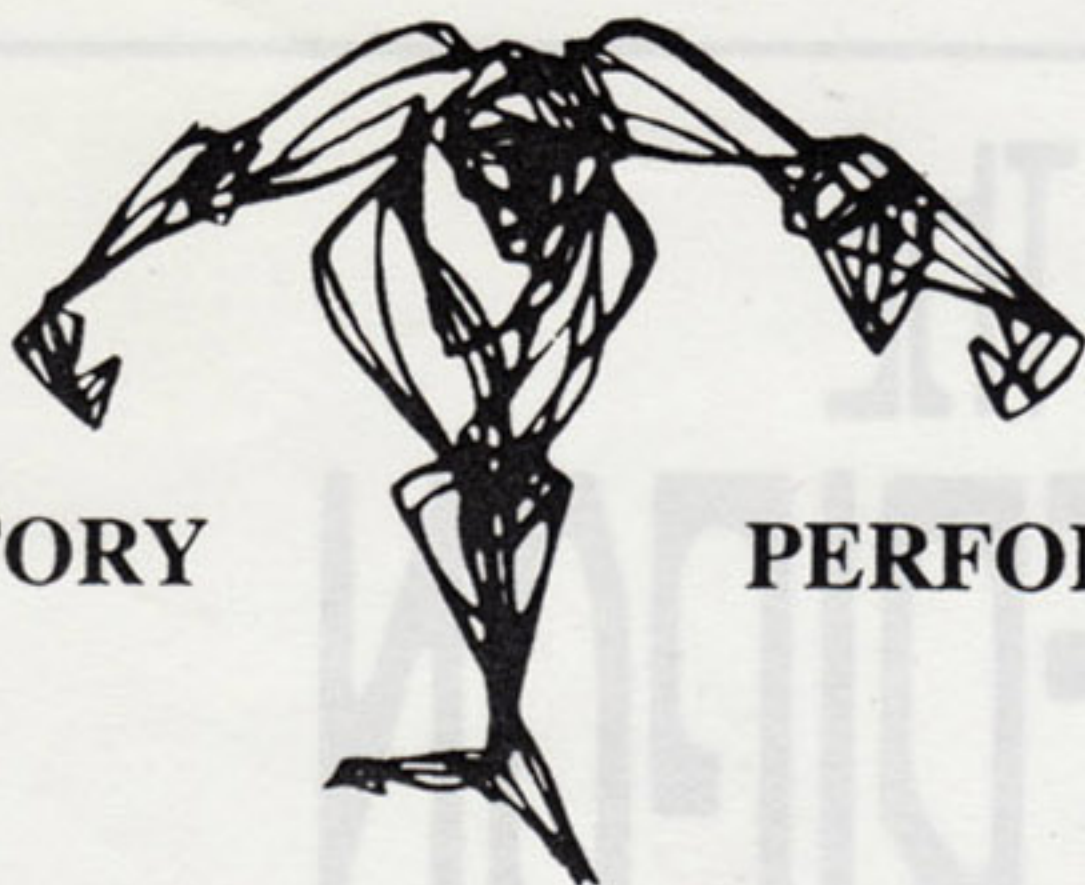
2:30 p.m.

Admission Free

**DONNELL LIBRARY CENTER  
AUDITORIUM**

20 West 53rd Street, New York City 212-621-0619





**REPERTORY**

**PERFORMANCE**

***MUSIC BOX***

Figures

Mario Brufau  
Catherine Klein

*Music: from a traditional music box*

***THE LOVERS***

Witness  
Female  
Male

Frank Copello  
Mary Eastman  
Marc Maislen

***PEEPSHOW***

Man  
Intimates

Dale Fuller  
Jean Barbour, Mario Brufau, Gary Cunningham,  
Katlin Tyler, Mary Eastman

*(Sound score composed and performed by Joseph Citta)*

— **Intermission** —  
10 Minutes



## **SLUDGE**

Marc Maislen, Gary Cunningham,  
Sludges Katlin Tyler, Dale Fuller, Mario Brufau,  
Frank Copello, Mary Eastman

*Music: Capriccio Italienne, Tchaikovsky; Poet & Peasant Overture, Von Suppé*

## **HURLY-BURLY**

Compulsive Mario Brufau  
Boor Paul Curtis  
Social Martyr Dale Fuller

## **DREAMS**

(Excerpt)

Dreamer Paul Curtis  
Alter Ego Marc Maislen  
Figments Dale Fuller, Mario Brufau, Catherine Klein,  
Katlin Tyler, Gary Cunningham, Mary Eastman

*Music: Bulent Arel*

## **SIX**

Strangers Mario Brufau, Dale Fuller, Jean Barbour,  
Marc Maislen, Mary Eastman, Paul Curtis

(This play was made possible by support from The Rockefeller Foundation)

---

## **Company**

Jean Barbour, Mario Brufau, Frank Copello, Paul Curtis,  
Gary Cunningham, Mary Eastman, Dale Fuller, Joy Garnett,  
Catherine Klein, Marc Maislen, Katlin Tyler  
& Mr. Bones

Technicians: Bob Bellamy, Joel S. Charleston



**AMERICAN MIME** is a unique indigenous performing art that blends in a new balance the arts of acting, moving, pantomime, playwriting and design. It is a complete theatre medium defined by its own aesthetic laws, terminology, techniques, script material and teaching methods, in which non-speaking actors, in characterization, perform the symbolic activities of American Mime plays through movement that is both telling and beautiful.

**THE AMERICAN MIME THEATRE** is a professional performing company and training school. It was founded in 1952 and has performed its services continuously since then under the direction of Paul J. Curtis who created the medium.

**AMERICAN MIME, INC.**, is a not-for-profit tax exempt Public Foundation incorporated in 1970 to promote the medium, American Mime, internationally.

#### **Funding:**

New York State Council on the Arts, The Capezio Foundation, Chemical Bank, The Rockefeller Foundation, ABC, Inc., Con Edison, New York Foundation for the Arts, CBS, Inc., Citibank, Mobil Foundation, Inc., The New York Times Company Foundation, Inc., National Endowment for the Arts, and support from Friends of American Mime.

#### **In-Kind Donation:**

Materials for the Arts, NYC Dept. of Cultural Affairs, Lehman Brothers Co., OTB, F.O. Pierce co., Metropolitan Life Foundation, Friends of American Mime.

The history of American Mime is available at the following libraries:

The New York Public Library for the Performing Arts, NYC  
Yale University, Crawford Theatre Collection, New Haven, Conn.  
Harvard College Library, Theatre Collection, Cambridge, Mass.

*Unauthorized photography of this performance is prohibited.*



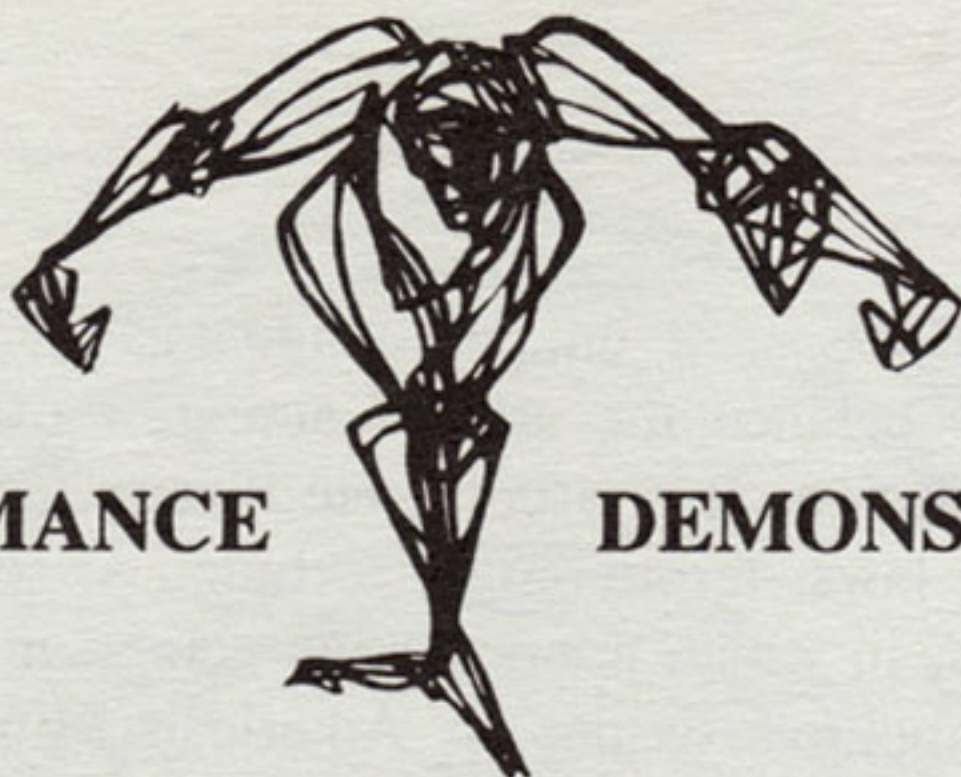
Celebrating Its  
Second Century

---

The New York Public Library

All Programs Are Subject To Last-Minute Change And Cancellation.





## PERFORMANCE

## DEMONSTRATION

### SLUDGE

Sludges

Catherine Klein, Michael O'Brien, Janet Carafa, Dale Fuller,  
Mario Brufau, Tanya Kane-Parry, Frank Copello, Mary Eastman

*(Music: Capriccio Italienne, Tchaikovsky; Poet & Peasant Overture, Von Suppe)*

### Introduction

Paul J. Curtis, Director

### Procedures

Technique  
Moving to Words

The Company

### HURLY-BURLY

Compulsive  
Boor  
Social Martyr

Dale Fuller  
Paul Curtis  
Michael O'Brien

### Procedures

Characterization  
Interplay

The Company

### SIX

Strangers

Michael O'Brien, Dale Fuller, Jean Barbour,  
Marc Maislen, Mary Eastman, Paul Curtis

*(This play was made possible by support from The Rockefeller Foundation)*

---

### Company

Jean Barbour, Peter Brooke, Mario Brufau, Janet Carafa, Frank Copello,  
Paul Curtis, Mary Eastman, Dale Fuller, Tanya Kane-Parry,  
Catherine Klein, Marc Maislen, Michael O'Brien  
& Mr. Bones



**AMERICAN MIME** is a unique indigenous performing art that blends in a new balance the arts of acting, moving, pantomime, playwriting and design. It is a complete theatre medium defined by its own aesthetic laws, terminology, techniques, script material and teaching methods, in which non-speaking actors, in characterization, perform the symbolic activities of American Mime plays through movement that is both telling and beautiful.

**THE AMERICAN MIME THEATRE** is a professional performing company and training school. It was founded in 1952 and has performed its services continuously since then under the direction of Paul J. Curtis who created the medium.

**AMERICAN MIME, INC.**, is a not-for-profit tax exempt Public Foundation incorporated in 1970 to promote the medium, American Mime, internationally.

#### **Funding:**

New York State Council on the Arts, The Capezio Foundation, Chemical Bank, The Rockefeller Foundation, ABC, Inc., Con Edison, New York Foundation for the Arts, CBS, Inc., Citibank, Mobil Foundation, Inc., The New York Times Company Foundation, Inc., National Endowment for the Arts, and support from Friends of American Mime.

#### **In-Kind Donation:**

Materials for the Arts, NYC Dept. of Cultural Affairs, Lehman Brothers Co., OTB, F.O. Pierce co., Metropolitan Life Foundation, Friends of American Mime.

The history of American Mime is available at the following libraries:  
The New York Public Library for the Performing Arts, NYC  
Yale University, Crawford Theatre Collection, New Haven, Conn.  
Harvard College Library, Theatre Collection, Cambridge, Mass.

*Unauthorized photography of this performance is prohibited.*

**61 FOURTH AVE. NY., N.Y. 10003**

**(212) 777-1710**



The New York Public Library for the Performing Arts

# BRUNO WALTER

## AUDITORIUM

40 Lincoln Center Plaza  
New York, N.Y. 10023-7498



September 22  
1994

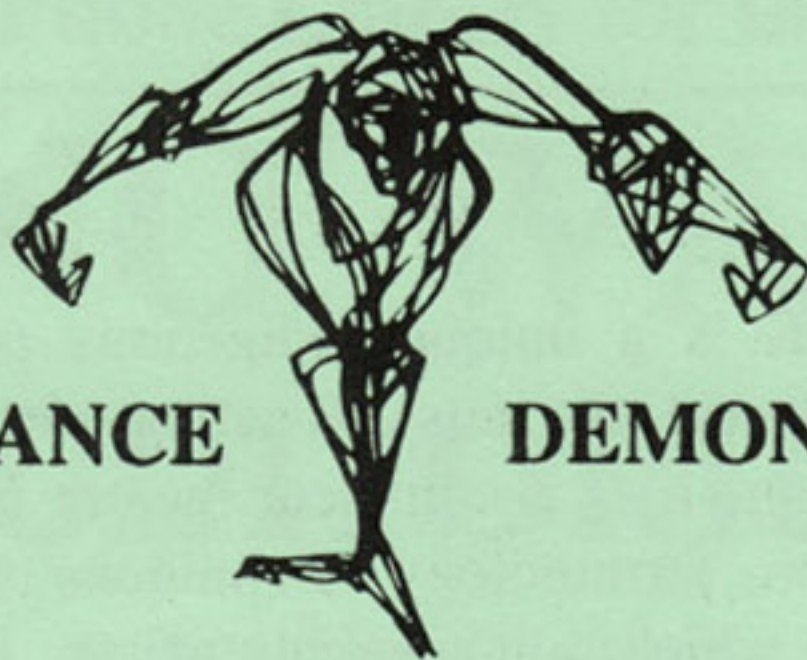
Thursday  
3:00 p.m.

Series Producer: Alan J. Pally

Free  
Admission

Programs are subject to cancellation. Please telephone 870-1630 when the Library is open to confirm performance schedules. The use of cameras and recorders in this theatre is not allowed.





**PERFORMANCE**

**DEMONSTRATION**

**Introduction**

Paul J. Curtis, Director

**Procedures**

Technique  
Moving to Words

The Company

**HURLY-BURLY**

Compulsive  
Boor  
Social Martyr

Mario Brufau  
Paul Curtis  
Dale Fuller

**Procedures**

Characterization  
Interplay

The Company

**THE LOVERS**

Witness  
Female  
Male

Frank Copello  
Janet Carafa  
Marc Maislen

**SIX**

Strangers

Mario Brufau, Dale Fuller, Jean Barbour,  
Marc Maislen, Mary Eastman, Paul Curtis

*(This play was made possible by support from The Rockefeller Foundation)*

---

**Company**

Jean Barbour, Mario Brufau, Janet Carafa, Frank Copello, Paul Curtis,  
Mary Eastman, Dale Fuller, Joy Garnett, Marc Maislen,  
& Mr. Bones

Technician: Joel S. Charleston



**AMERICAN MIME** is a unique indigenous performing art that blends in a new balance the arts of acting, moving, pantomime, playwriting and design. It is a complete theatre medium defined by its own aesthetic laws, terminology, techniques, script material and teaching methods, in which non-speaking actors, in characterization, perform the symbolic activities of American Mime plays through movement that is both telling and beautiful.

**THE AMERICAN MIME THEATRE** is a professional performing company and training school. It was founded in 1952 and has performed its services continuously since then under the direction of Paul J. Curtis who created the medium.

**AMERICAN MIME, INC.**, is a not-for-profit tax exempt Public Foundation incorporated in 1970 to promote the medium, American Mime, internationally.

#### **Funding:**

New York State Council on the Arts, The Capezio Foundation, Chemical Bank, The Rockefeller Foundation, ABC, Inc., Con Edison, New York Foundation for the Arts, CBS, Inc., Citibank, Mobil Foundation, Inc., The New York Times Company Foundation, Inc., National Endowment for the Arts, and support from Friends of American Mime.

#### **In-Kind Donation:**

Materials for the Arts, NYC Dept. of Cultural Affairs, Lehman Brothers Co., OTB, F.O. Pierce co., Metropolitan Life Foundation, Friends of American Mime.

The history of American Mime is available at the following libraries:

The New York Public Library for the Performing Arts, NYC  
Yale University, Crawford Theatre Collection, New Haven, Conn.  
Harvard College Library, Theatre Collection, Cambridge, Mass.

*Unauthorized photography of this performance is prohibited.*